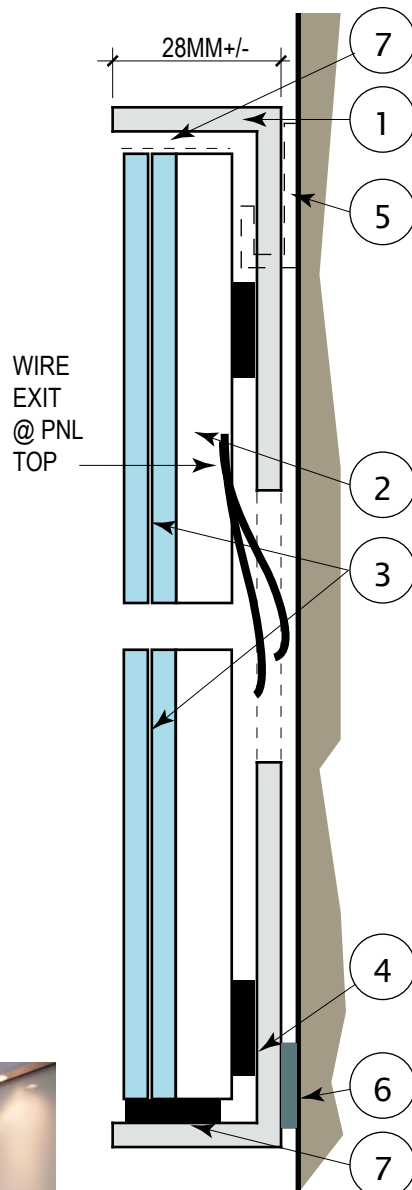
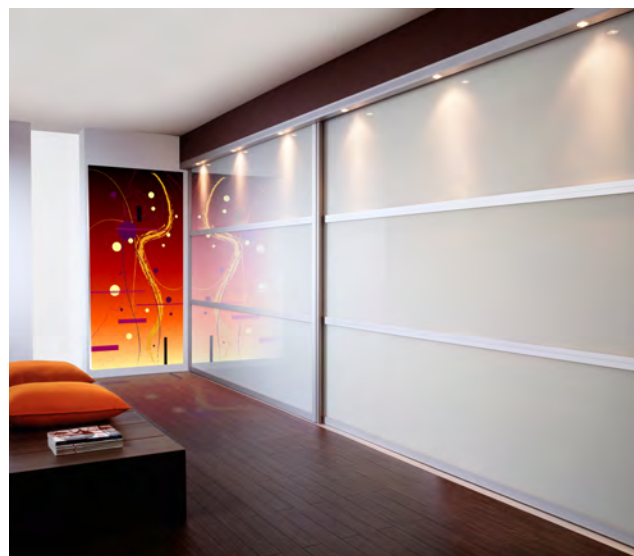


1 TYP. PANEL ELEVATION
NOT TO SCALE



2 TYP. PANEL SECTION
FULL SIZE 1"=1"

- NOTES FOR FABRICATION:**
1. ALUM FRAME CORNERS MITERED & TACK-WELDED REAR.
 2. LUMISHEET 6 OR 8 MM LED PANEL: 5300K PURE WHITE WITH MYLAR BACKING.
 3. PPG STARPHIRE LOW-IRON GLASS (OPT. TEMPERED WHERE CODE REQUIRES). KRYSTALFLEX PE399 URETHANE W/UVA-UVB.
 4. 3M DS VHB 1/16" BLACK W/ 1/8" BLACK NEOPRENE GLAZING BLOCK SPACERS
 5. CONTINUOUS CLIP - USE APPROPRIATE WALL ANCHOR PER PANEL SIZE/WEIGHT. OTHER MOUNTING HARDWARE MAY BE SUBSTITUTED - PLEASE INQUIRE.
 6. BUMPERS
 7. VHB POLYURETHANE TAPE ALL SIDES OF PANEL - TYPICAL. BLACK

ESTIMATED LIFE SPAN FOR LED IS 50,000 HOUR.

NOTE: ALL DESIGN, DETAILS AND SPECIFICATIONS ARE SUBJECT TO CHANGE WITHOUT NOTICE. CUSTOM FABRICATION IS AVAILABLE AT ADDITIONAL COST. PLEASE INQUIRE.

ILLUMINATED ART GLASS PANEL

THIS GLASS REQUIRES A TEMPER MARK YES NO
SCALE:



liquidoranges STUDIO, LLC
148 South Main Street
Sharon, MA 02067
www.liquidoranges.com
Integrating Art With Architecture Through Glass

ISSUE	DATE	REV
FIRST RELEASE	110811	0
REVISED SPEC	050612	1
REVISED SPEC	103012	2

NOTICE:
This document is an instrument of service. It contains confidential design and technology information protected by national and international intellectual copyright and property laws, © 2012 liquidoranges STUDIO - ALL RIGHTS RESERVED

ILLUMINATED ART GLASS PANEL AND FRAME - TYPICAL

LO#	SHEET: IAGP - 01
-----	------------------